

# Building Research Capacity

NIDA JCOIN Steering Committee Meeting  
April 12, 2023

# Session Objectives

---

By the end of this presentation, participants will be able to:

1. Discuss how the program design has helped early career investigators and practitioners with building their careers.
2. List three program interventions which have had impact for the participants.
3. Consider how research education could be applied to home institutions

# LEAP Investigator Programs Highlights

---

## LEAP Investigators: Early Career Investigator Training (Three Cohorts of 10)

- Three cohorts totaling 25 Individuals chosen to participate via holistic application for two-year program
- Inclusivity and Diversity peaked with this last cohort
- All actively engaged with mentors
- Monthly sessions focused on research design and proposal writing with mock scientific review of faculty and peer proposals
- Cohorts awarded small research grants of \$10,000 each to conduct small projects in second year

# LEAP Scholar Program Highlights

---

**LEAP Scholars: Practitioners & Early Graduate Students Exploring Research with CJ involved populations (Pilot Cohort of 10 and three additional cohorts of 20)**

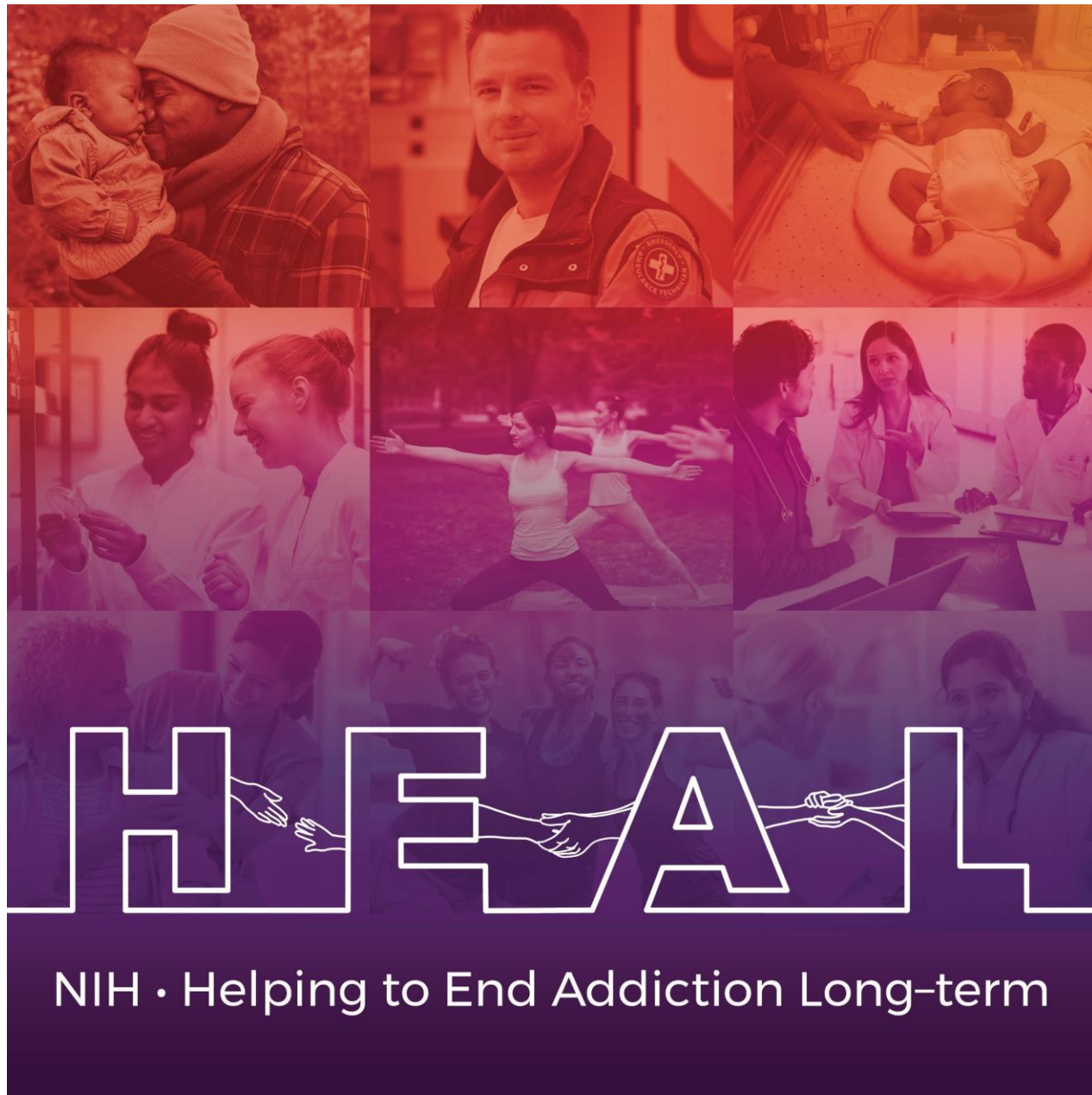
- Individuals chosen to participate via holistic application
- Monthly sessions focused on some basic research skills and nuances of working in justice settings
- Groups very actively engaged

# Benefits germane to both groups

---

- Access to a research librarian and library resources from UMass library, a regional National Library of Medicine site
- Applications peer-reviewed by career researchers and educators
- Facilitate and encourage scholarly projects
- Registration and travel supported for participation in the Academic and Health Policy Conference on Criminal Justice Health
- Some participants chosen to attend a one-week summer immersion course on research design at University of South Florida



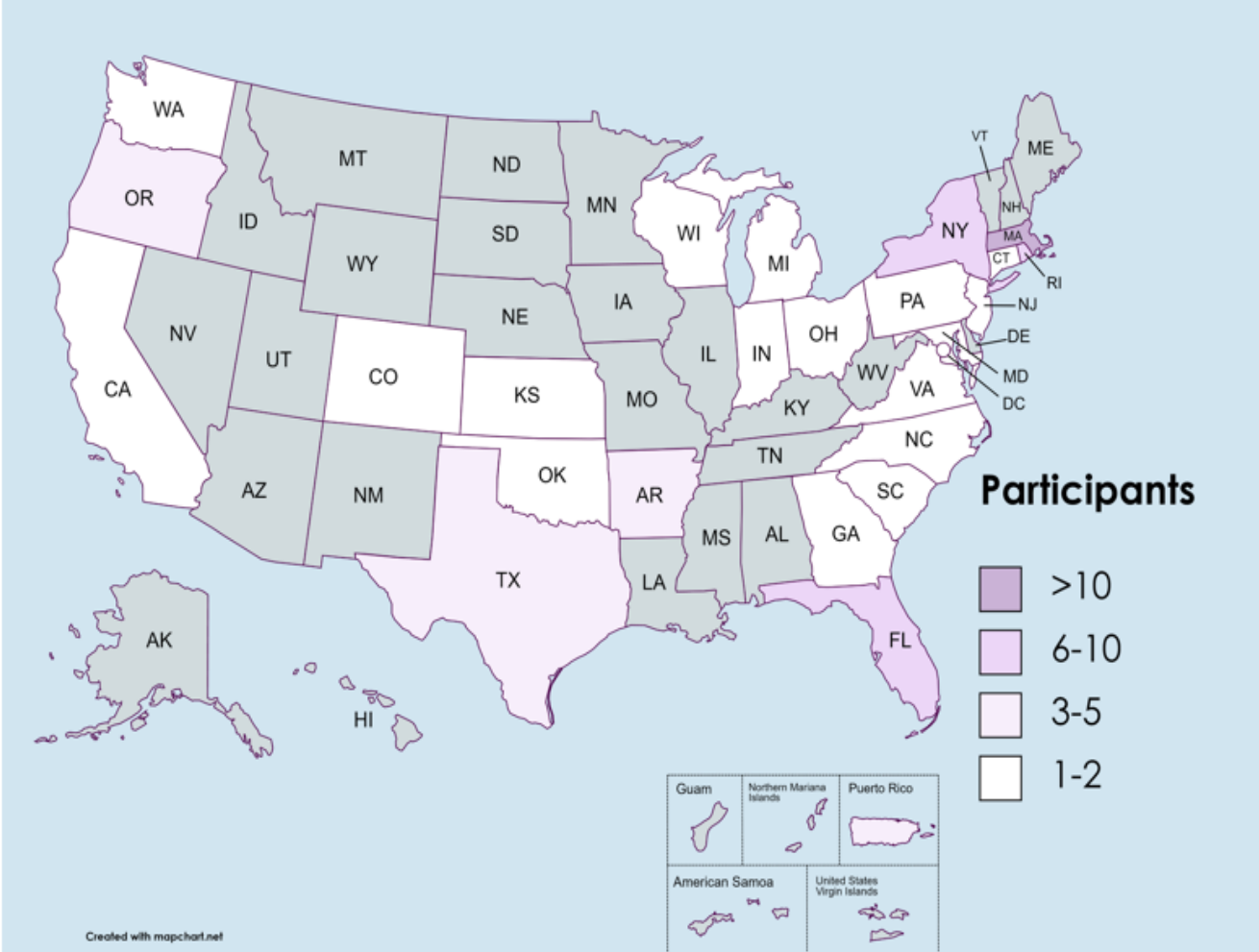


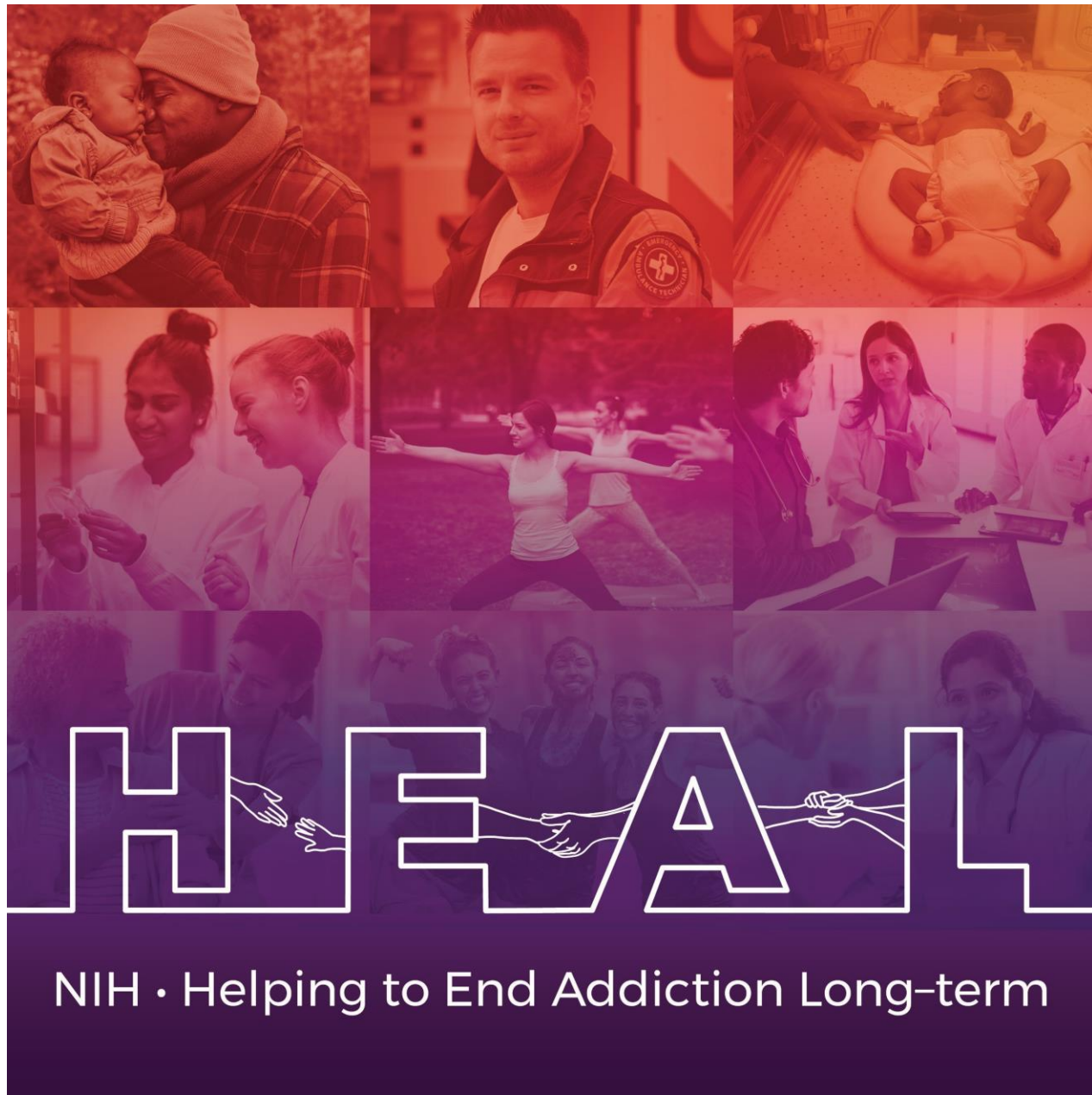
# Participants

NIH • Helping to End Addiction Long-term

# Represent 25 States & Puerto Rico

Northeast = 27  
 Mid-Atlantic=10  
 Southeast=14  
 Midwest=5  
 Southwest=6  
 West=5  
 Puerto Rico=3





# Evaluation



## Scholars: Overall Self Efficacy and Self Efficacy for all domains Improved (N=15)

Scale/Subscales	Time 1	Time 2	p value	Effect Size dm
Self Efficacy	5.53	7.09	0.002	1.005
-Study Design	4.99	6.52	0.002	0.965
-Collaborations & Grant Prep	5.74	7.46	<.001	1.079
-Writing Manuscripts	5.83	7.38	0.006	0.834
-Consent Form/Process	6.13	7.40	0.023	0.661

## Investigators: Overall Self Efficacy and Self Efficacy for Study Design Improved (N=7)

Scale/Subscales	Time 1	Time 2	p value	Effect Size dm
Self Efficacy	7.05	8.02	0.028	1.087
-Study Design	6.61	7.69	0.008	1.468
-Collaboration & Grant Prep	6.83	7.76	0.118	0.690
-Writing Manuscripts	7.54	8.71	0.054	0.903
-Consent Form/Process	8.21	8.50	0.354	0.378

0=No Confidence; 10=Total Confidence

## Scholarly Products: Grants & Disseminations

Products	Investigators (N=13)	Scholars (N=15)
Abstracts submitted to conferences	64	23
Conference presentations	49	18
Manuscripts under development	65	24
Manuscripts published	92	33
Grant proposals submitted	24	4
Grants funded	10	2

# It Takes a Village: Thanks to all & to those who have served as mentors

---

- **CORE TEAM:**

- Faye Taxman, PhD, CTC PI, George Mason University (GMU)
- Danielle Rudes, PhD, MPI for Capacity Building Core, Sam Houston University
- Heather Toronjo, MS, Research Associate, GMU

- **Other Faculty Leads:**

- David Farabee, PhD NYU
- Sandy Springer, MD, PhD Yale
- Kate Pivovarova, PhD UMass Chan
- Becky Baltich Nelson & Becca Drouhard, Librarians, UMass Chan

---

# **Work-in-progress: A collaborative scoping review to understand insertion and ingestion non-suicidal self-injurious behaviors**



---

**Presenter: Katherine (Katie) Pereira, PhD Student**

**Slides**

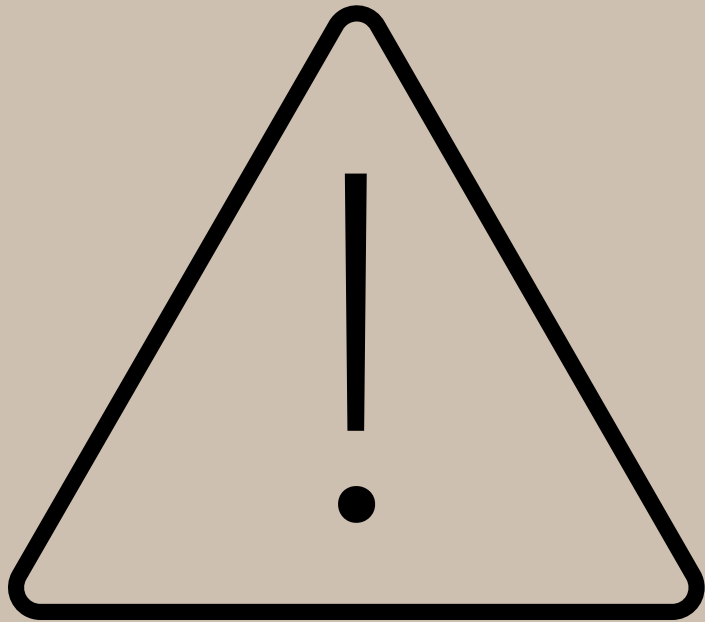
by: Emma McCoy

Authors: Emma McCoy, Katherine M.K. Pereira, Mickela Heilicher, Becky Baltich Nelson, and Michael R. Koenigs



---

# Sensitive Topic Warning



Some of the topics discussed in this presentation include behaviors of self-harm or self-injury. Please do what you need to do to stay safe — including leaving the room, not looking or listening to the presentation, etc.



## My background

---

- . 3<sup>rd</sup> Year Clinical Psychology PhD student
- . JCOIN LEAP Scholar program 2022-23
  
- . Research interests: feasibility and effectiveness of mental health assessment & treatment in incarcerated populations



# Non-suicidal self-injury (NSSI)



## Definition

- Intentional harm
- Lacking intent to end their life
- Cutting, scratching, burning, head banging, etc.



## Research Limitations

- Different definitions
- Limited research within justice-involved populations
- Institutional regulations



# Insertion & Ingestion NSSI

---



## Insertion

Intention is to maim  
or puncture



## Ingestion

Intention is to cause  
internal injury or  
intestinal disturbance



# Motivation

01

Rates increase in forensic settings

02

Medical severity

03

Challenges to staff

04

Not common behaviors







# Study plans

---



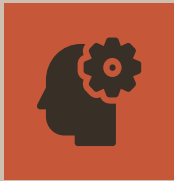
## The Original Plan

- Quantitative study
- Working with DOC staff member
- Data from residents at Waupun Correctional (Waupun, Wisconsin)



## The Current Plan

- Scoping review
- Data from databases & journals
- Understand prevalence, characteristics, and extent of literature



# Implications



**Investigate**



Encourage more research on the topic



**Predict**



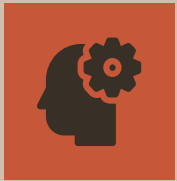
Who is likely to do these behaviors?



**Prevent**



Develop treatment techniques



---

# JCOIN LEAP Program Support

---



## Information

- Presentation on systematic and scoping reviews by Gregg A. Stevens



## Connections

- Connections to librarian to collaborate with on review



## Technical Help

- Set-up on Covidence, access to resources, & editing help

## Contact me!



Email: [kpereira2@wisc.edu](mailto:kpereira2@wisc.edu)



Twitter: @KatieKeola

Are you in need of a full-time post-bacc research assistant for your lab?  
Let me know!

Scan to find our protocol on OSF:



Thanks!

Special thanks to:

- JCOIN LEAP Program

This project is supported by:

- The National Institute of Mental Health of the National Institutes of Health under Award Number T32MH018931
- University of Wisconsin-Madison Department of Psychology's Undergraduate Thesis Award

Credits: This presentation template was created by Slidesgo, and includes icons by Flaticon, and infographics & images by Freepik



INCARCERATION AND MENTAL HEALTH  
RESEARCH LAB | UW-MADISON



DEPARTMENT OF  
PSYCHOLOGY





# JCOIN Scholar Program: Daniel Bullman





# Introduction

**Incoming PhD Student**  
Kent School of Social  
Work and Family Science,  
University of Louisville

**Continuing Education  
Director, Board Member**  
Indiana Society for Public  
Health Education

# JCOIN Project - Scoping Review of Health Education Practices Promoting MATs for Expecting Mothers

## Factors

- Lack of providers or health educators in rural settings
- Stigma
- Costs

## Preliminary Findings

- Lack of providers in city centers.
- Transportation
- Court Systems, Law Enforcement



# Scholar Program Impact

## **Skill Development**

Avenue for research skill development - undergraduate programs centered on training special educators and therapists.

## **Networking**

2022 ACCJH introduced to academics in the fields of my research interests.

## **Removed Barriers**

System Impacted - limited internships, experiential opportunities.



# Program's Results

Academic journey met with many rejections. But through the skill building, networking, and research development my story has a happy ending.