

JCOIN

Reflections on NIDA's Justice Community Opioid Innovation Network (JCOIN) 2018-2024

NIDA JCOIN TEAM

Tisha Wiley - *JCOIN Director & Chief, Services Research Branch*

Lori Ducharme – *JCOIN Science Officer*

Carrie Mulford – *PO for JCOIN Hubs*

Julia Zur – *PO for CTC and Hubs*

Shelley Su – *PO for MAARC*

Marcy Fitz-Randolph – *Medical Officer & DSMB Lead*

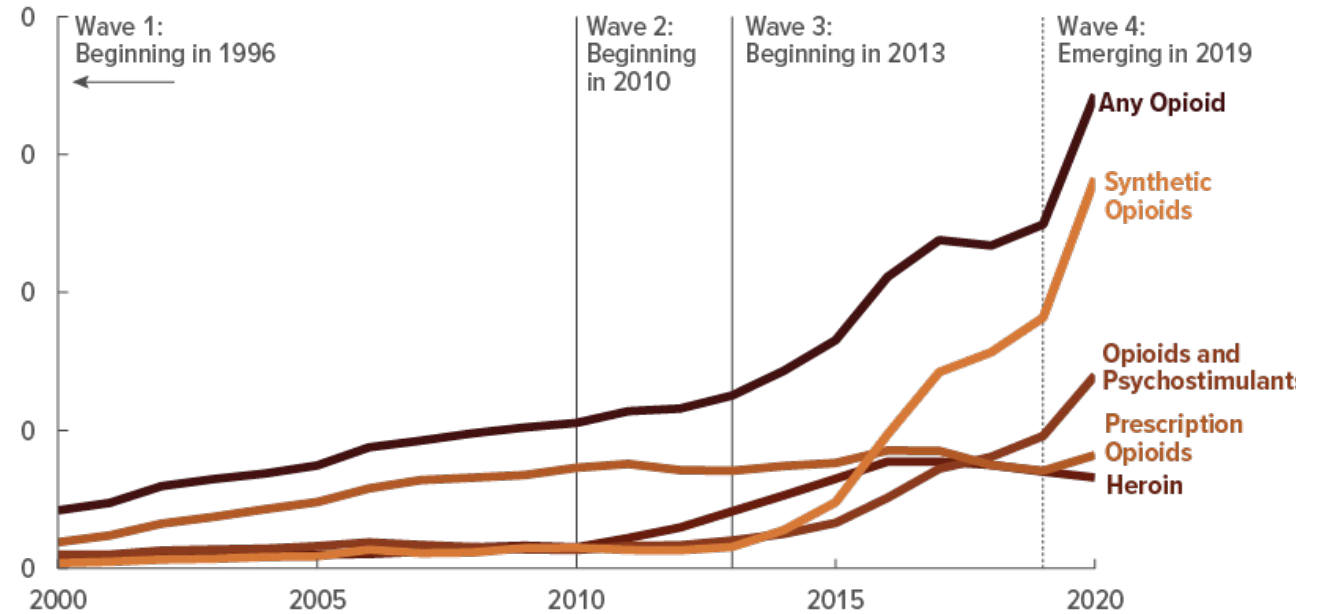
NIH
HEAL
INITIATIVE

*Franklin County Massachusetts Jail Women's Recreation Area
Photo Courtesy of Franklin County Sheriff's Department*



*Franklin County Massachusetts Jail Women's Recreation Area
Photo Courtesy of Franklin County Sheriff's Department*

The criminal legal system represents one of the highest impact settings for intervention in addressing the overdose crisis.



nearly 108k

People lost their lives due to an overdose in 2022

1 in 4

overdose decedents had prior year justice involvement

Indiana data linkage study 2015-2022 (Ray et al., 2023)

13-129x

Heightened risk of relapse during first 2 weeks of re-entry after incarceration

*Binswanger et al, 2013
Sordo et al, 2017
Ranapurwala et al, 2018*

31%

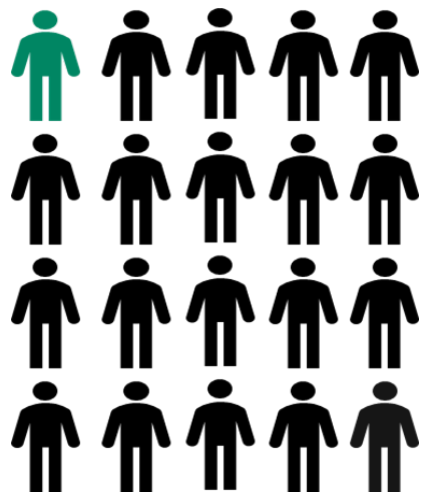
Projected reduction in overall overdose deaths when all 3 MOUDs offered in jails

RI simulation study: (Macmadu et al., 2021)



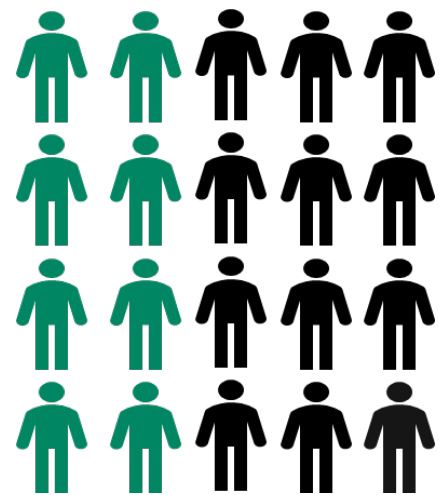
**CONTINUITY OF CARE AND
SERVICE ACCESS IN THE
COMMUNITY IS CRITICAL.**

*Cross-sector partnerships are
essential to continuity of care &
improving outcomes.*



5% of
Justice-Referred
Patients
Received Methadone
or Buprenorphine

40% of
Other Patients
Received Methadone
or Buprenorphine

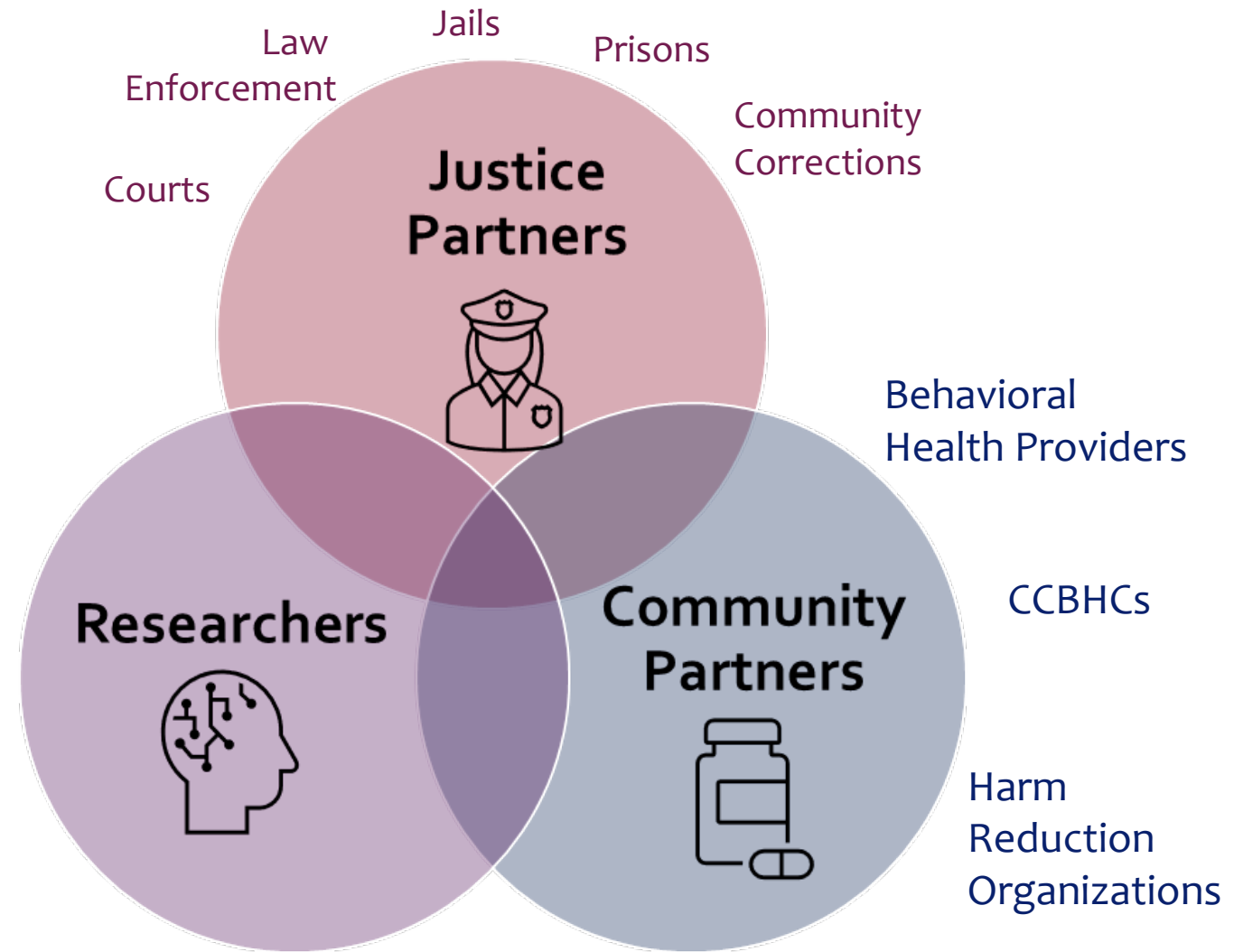


Source: Krawczyk et al., 2017

Justice Community Opioid Innovation Network (JCOIN):

*Reimagining Justice
System Responses to
Addiction and
Scaling What Works*

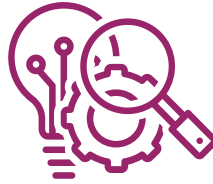
JCOIN 1.0: 2018-2025
JCOIN 2.0: 2024-2030



Emphasizes partnerships across justice and community stakeholders

JCOIN VISION

Every individual involved in the justice system with a substance use disorder should have access to effective treatment, while detained and while in the community



Research

Generate new evidence about what works and how to effectively implement



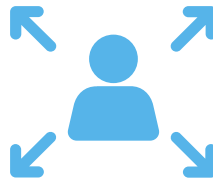
National Collaborative Network

Develop a network of researchers collaborating with practitioners across justice and community-based service settings



Resources for the Field

Become a go-to resource for researchers and practitioners



Capacity Building

Build capacity to conduct and apply research in justice settings



Science to Solutions

Create feedback loops that speed translation of science to solutions



WHAT IS JCOIN 1.0?

13 RESEARCH HUBS — — — — — →

2 SUPPORT CENTERS:



MAARC + CTC

**+ DATA & TRANSLATION
PRODUCTS**

55+ Additional Research Protocols

- 6 National Surveys
- 20+ Pilot Protocols
- 14 Modeling/Mapping Studies
- 6 Diversity Supplements
- 13 Small Grants



13 Multisite Clinical Trials

- 7 Linkage facilitation studies
- 2 Statewide policy rollouts in MA, NY
- 2 Comparative effectiveness studies of long-acting MOUDs
- 2 Organizational implementation trials

140

COUNTIES

38

STATES

+ PUERTO RICO

>22,800

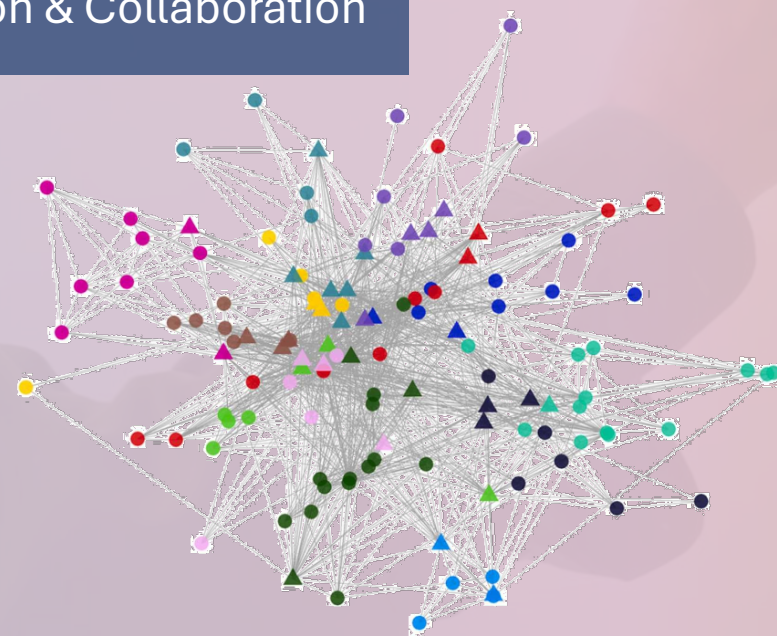
**PARTICIPANTS
ACROSS CLINICAL
TRIALS**

Photo: PI Dr. Michael Dennis sketches out his team's research study design

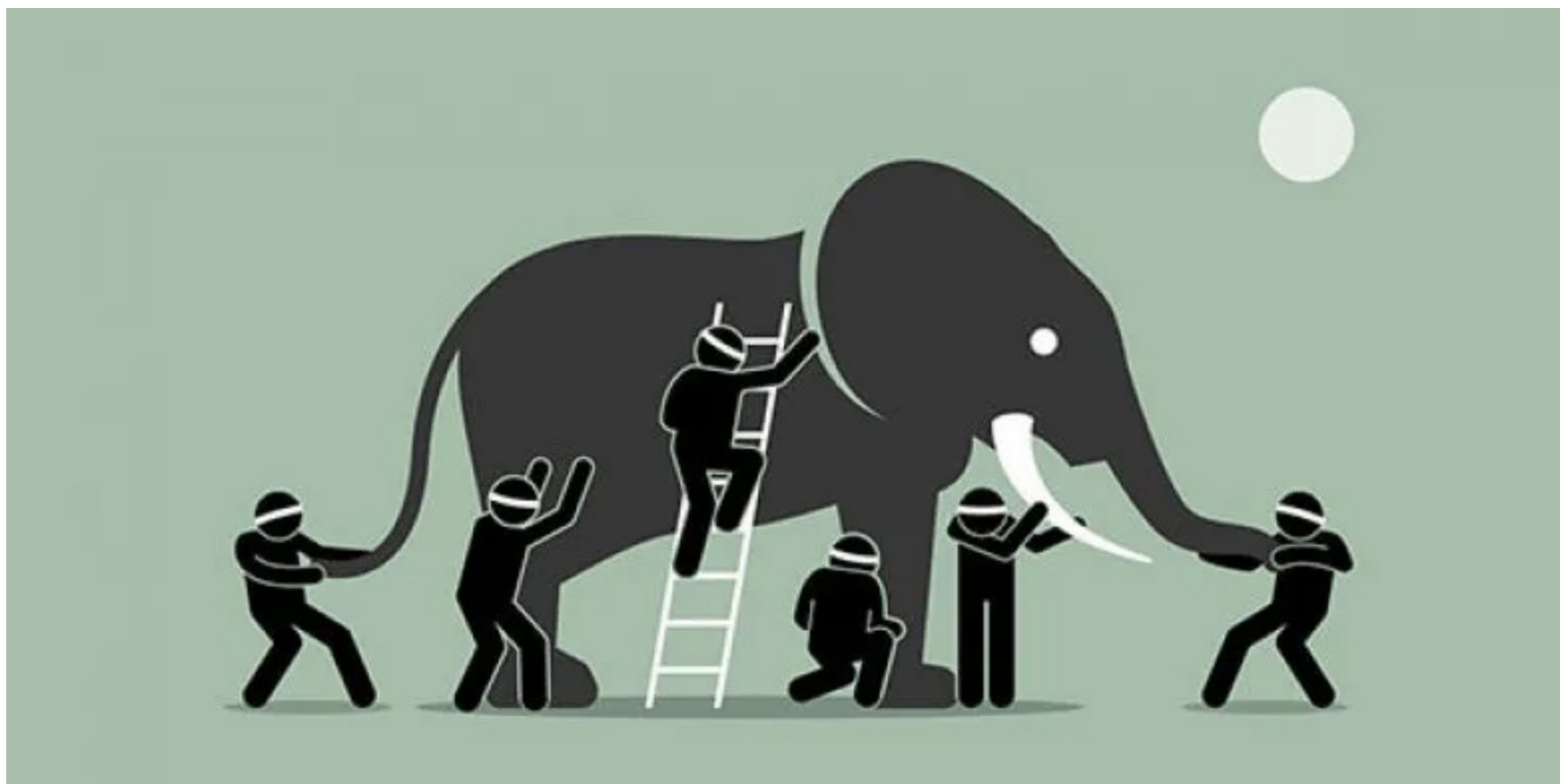
Photo Credit: Chestnut Health Systems

Building & Rapidly Translating the Evidence Base

Supporting Network Wide
Coordination & Collaboration



Ducharme et al. (2024). Collaboration and growth in a large research cooperative: A network analytic approach. *Evaluation and Program Planning*, 102: 102375.





It's a mentoring program!

It's a small grants program!

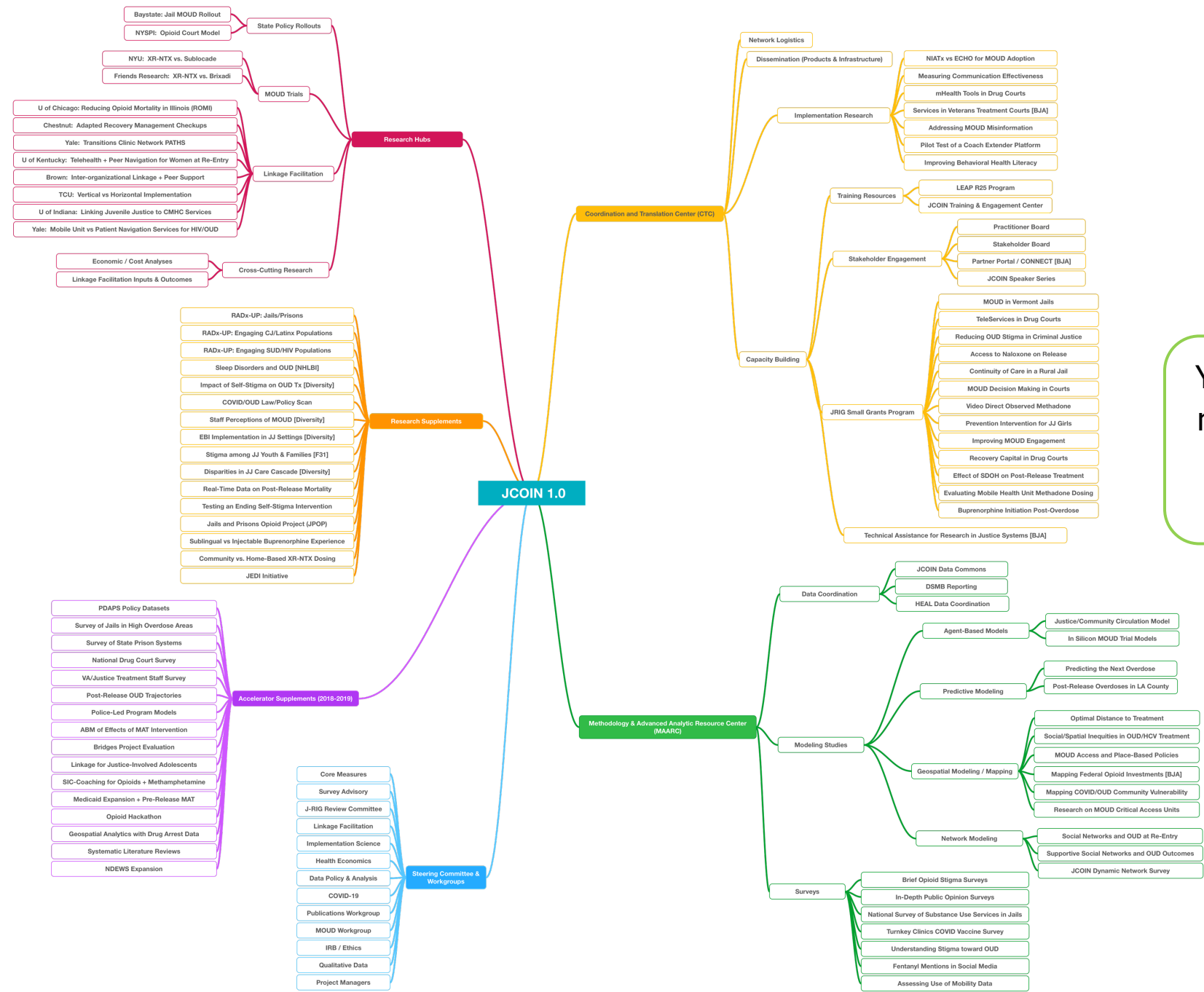
It's a research network!

It's a dissemination resource!

It's a training center!

It's a lifeline!

THIS
IS
JCOIN!



You can see this
map up close at
the poster
session!

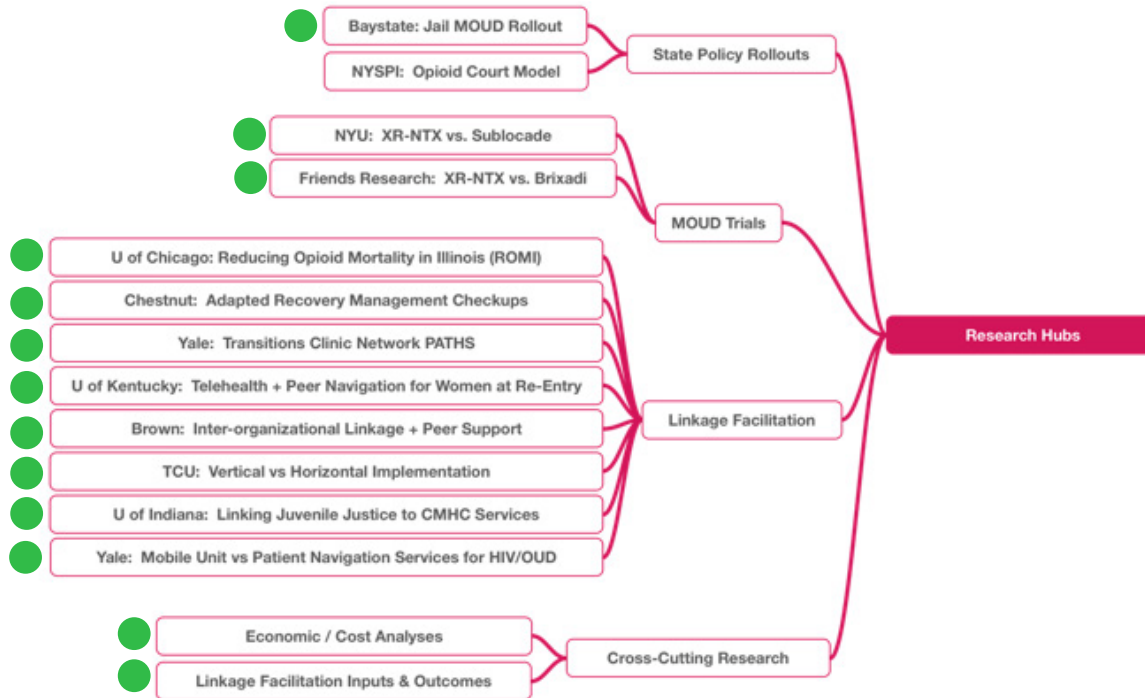


ACCELERATOR SUPPLEMENTS



- Earliest HEAL funding – supplements to existing (pre-JCOIN) grants
 - Justice / opioid research questions
 - Allowed us to “jump start” the network
 - Delivered products while the JCOIN trials were getting started (or stuck in COVID)
-
- National surveys – jails, state prisons, courts, VA
 - Policy datasets
 - Systematic literature reviews
 - Pilot studies
 - Modeling projects
 - Program evaluations

RESEARCH HUBS



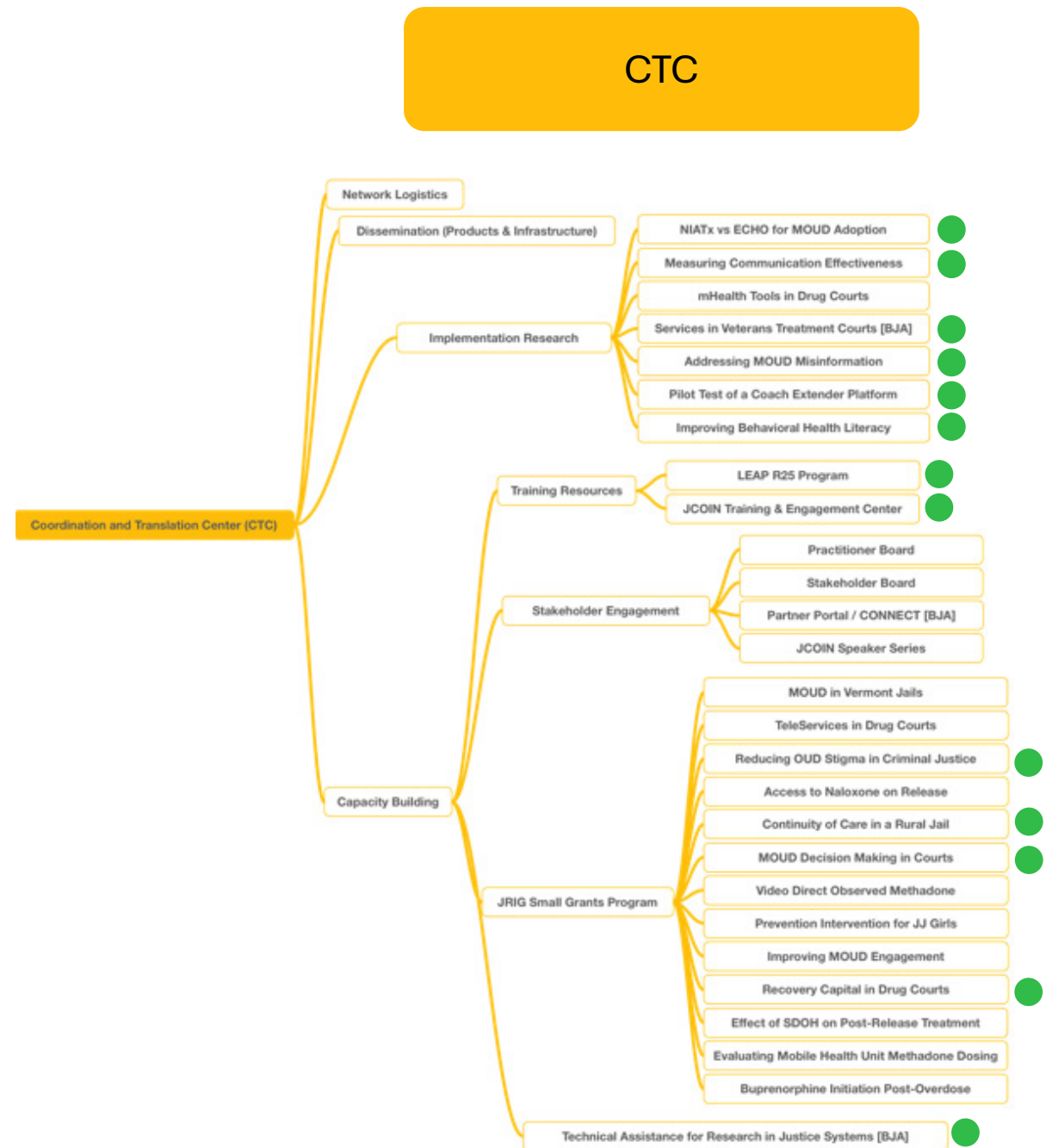
● Presentation at this meeting

- 12 trials across 3 domains:
 - State policy rollouts
 - MOUD trials
 - “Linkage facilitation”
- Activities integrating output of multiple trials:
 - Economic/cost analyses
 - Linkage Facilitation group

- Network coordination / infrastructure
- Dissemination machine™
- Implementation research
 - Includes 13th clinical trial
- Capacity Building
 - Stakeholder engagement
 - JRIG small grants program (13 awards)
 - JTEC learning library
 - LEAP R25
 - Technical Assistance Platform

CTC's work received additional support from the Bureau of Justice Assistance

● Presentation at this meeting



MAARC

- Data infrastructure / DSMB reporting

- 9 modeling & mapping studies
 - Public use resources:

- OEPS

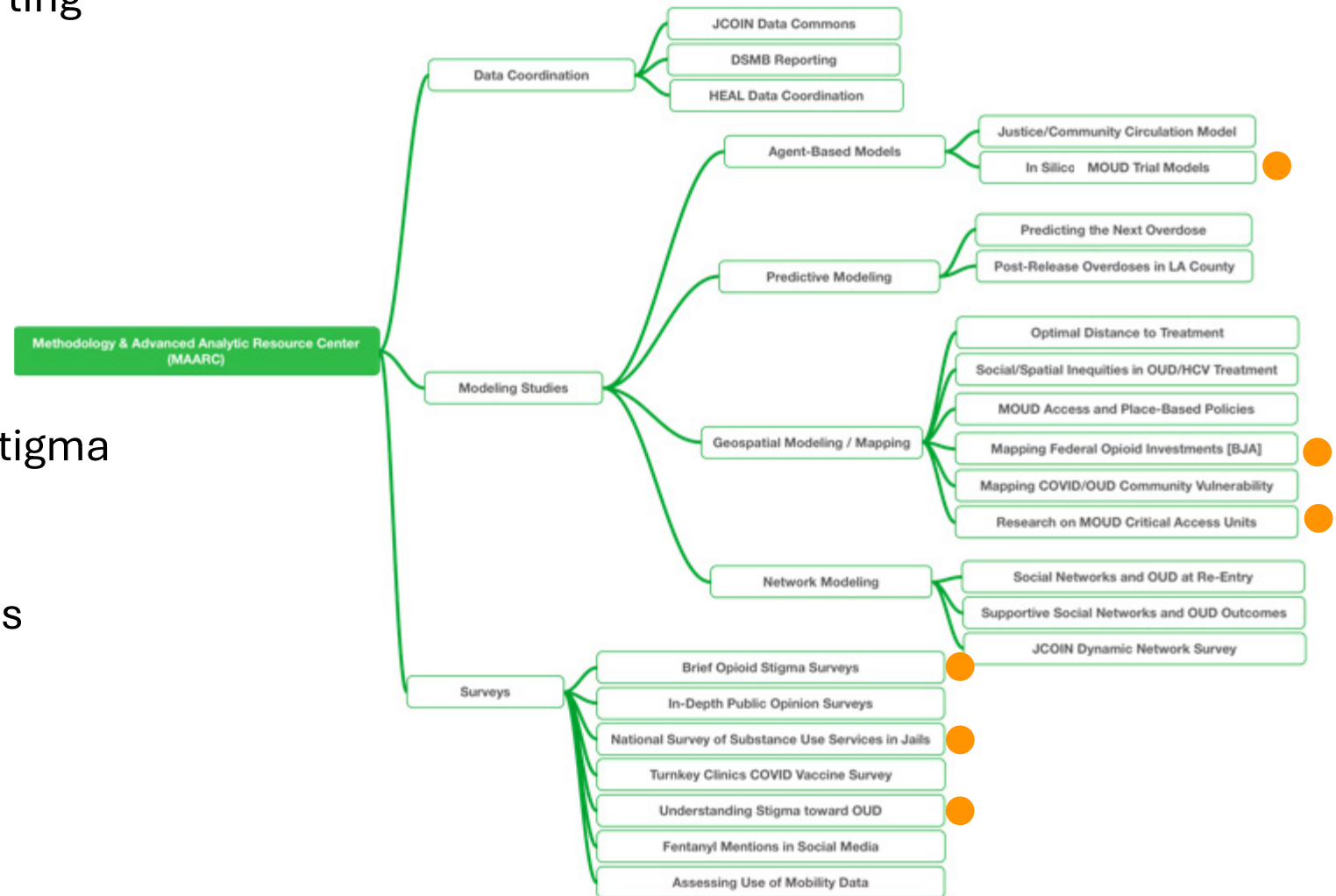
- Map of Federal opioid investments, FY19-20

- Surveys

- National public opinion on stigma & opioids (n=10)

- National jail survey

- Other survey-related projects



● Presentation at this meeting

SUPPLEMENTS



- RADx-UP
 - 5 hubs involved in efforts to scale-up COVID-19 testing in underserved populations
- Diversity Supplements
 - Provided support to early career investigators associated with several clinical trial teams
- Administrative Supplements
 - Supported opportunities for natural experiments and emerging topics
- JEDI Initiative
 - Opportunities to focus on EDI within Hubs and across the network

● Presentation at this meeting

WORKGROUPS



Core Measures – developed common & optional measures for all hubs; provides basis for cross-hub analyses; shared with JRIG and other outside researchers

Survey Advisory – brainstorming for planning & first reactions to NORC surveys & analyses; platform for collaboration

JRIG Review – researchers & practitioners reviewed **83** applications

LFIG – collected data to inventory LF roles & activities across LF hubs; published taxonomy of LF types

ISWG – developed framework for measuring fidelity to implementation strategies & linking to study outcomes

Health Economics – developed MOUD Budget Impact Tool; integrating lessons across hubs

COVID-19 – published multiple cross-hub papers based on pandemic experience in study sites

160 publications so far


More under review

Even more in the works!



<https://bit.ly/JCOINpublications>

Center for
Adding
Criminal
Excellence


JCOIN Coordination and Translation Center

[About](#) [Updates](#) [Research ▾](#) [Training ▾](#) [Resources ▾](#)

[Home](#) > [Research](#) > [JCOIN Publications Library](#)

JCOIN Publications Library

Explore the publications and research in the JCOIN research library below including articles, protocols, presentations, and more.

Publication Year:

2024 (16) ▾

Type:

View All ▾

Lead Author:

View All ▾

JCOIN Hub/Center

View All ▾

Keyword Search (e.g. MOUD)

Reset Filters

Referral to and engagement in SUD treatment within opioid intervention courts in New York: A qualitative study of implementation barriers and facilitators

Courts

Lead Author: Megan A. O'Grady

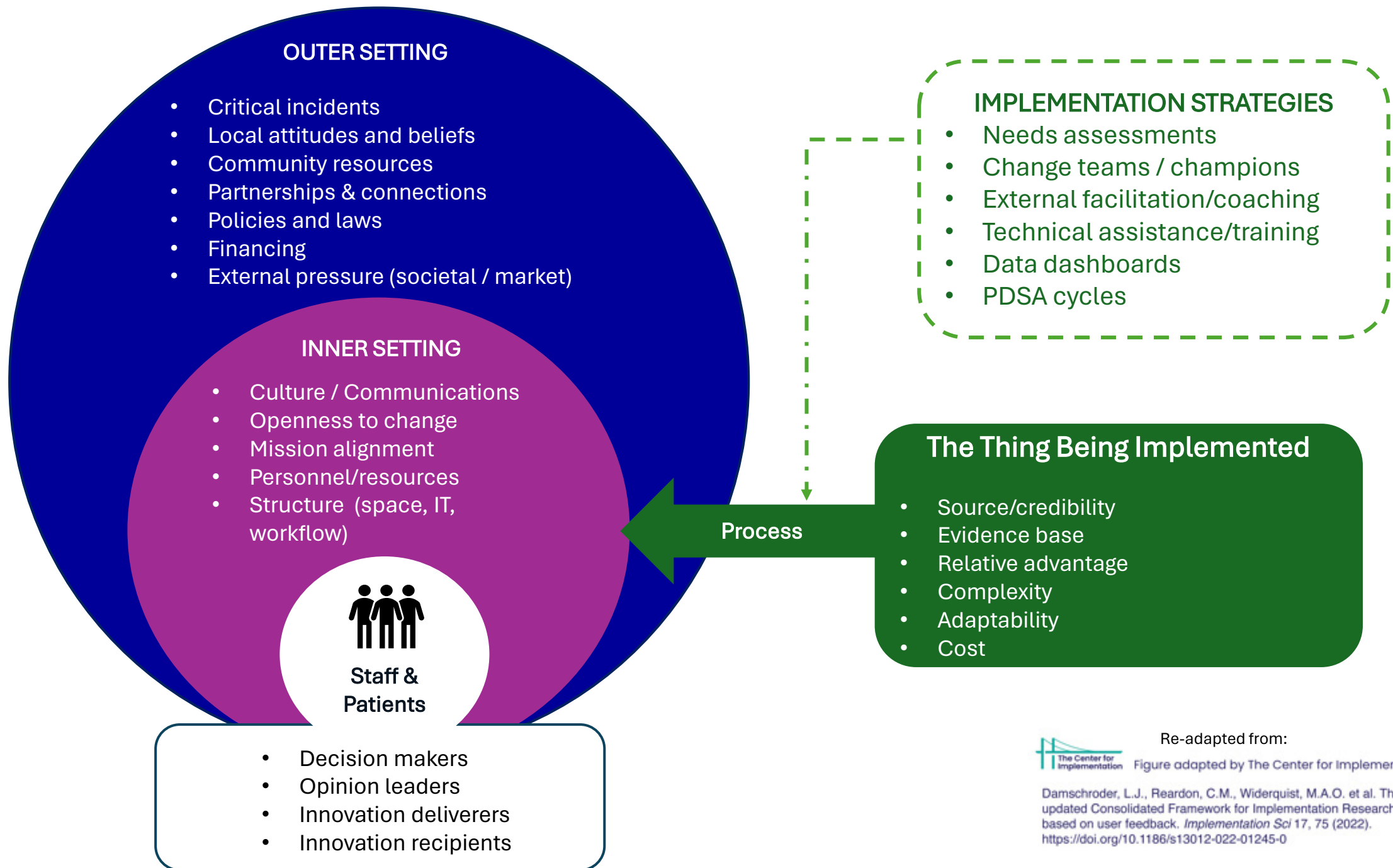
People with OUD are frequently in contact with the court system and have markedly higher rates of fatal opioid overdose. Opioid intervention courts (OIC) were developed to address increasing rates of opioid overdose among court defendants by engaging court staff...

The association between attitudes and the provision of medications for opioid use disorder (MOUD) in United States jails

MOUD Services Jails

Lead Author: Aly Pfaff

MOUD is prevalent among individuals who are incarcerated, yet medications for opioid use disorder (MOUD) are not widely available in US jails and prisons. Negative staff attitudes across the criminal legal system may prevent MOUD from being provided. We sought...



Legislatively mandated implementation of medications for opioid use disorders in jails: A qualitative study of clinical, correctional, and jail administrator perspectives

The association between attitudes and the provision of medications for opioid use disorder (MOUD) in United States jails

Client attitudes toward virtual treatment court

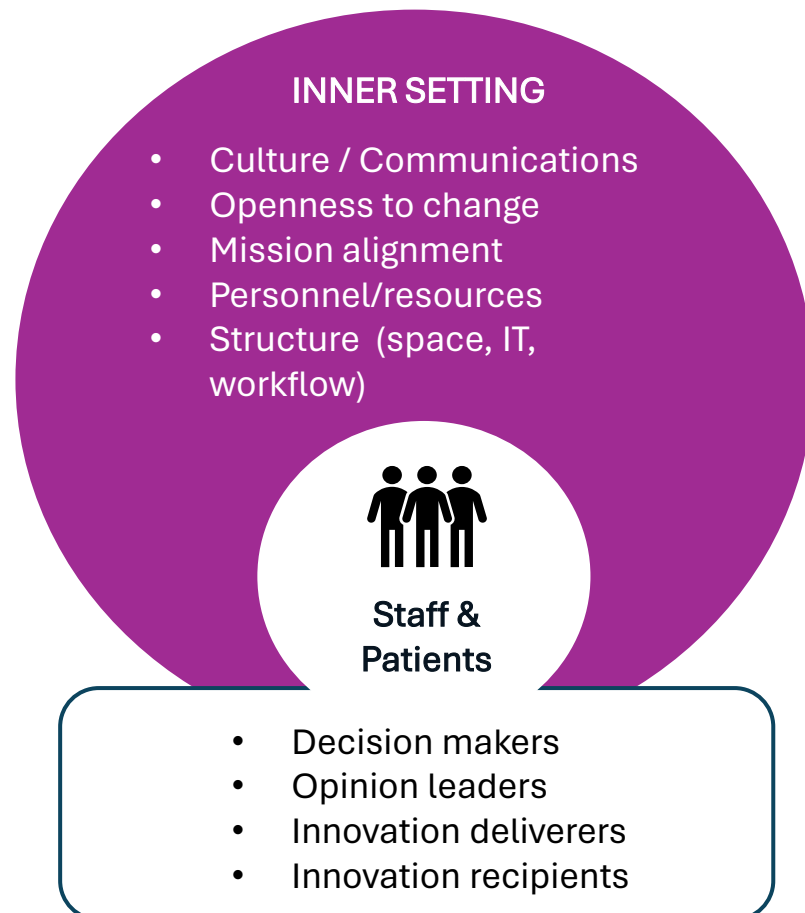
Patient Experiences with the Transition to Telephone Counseling during the COVID-19 Pandemic

Access to Services for Pregnant People With Opioid Use Disorder in Jails in the United States

Treatment preference for opioid use disorder among people who are incarcerated

HIV Risk and Interest in Preexposure Prophylaxis in Justice-Involved Persons

Cultural adaptation and psychometric properties of the Substance Abuse Self-Stigma Scale among Latinos with Substance Use Disorders: An effective screening tool for correctional and community settings



OUTER SETTING

- Critical incidents
- Local attitudes and beliefs
- Community resources
- Partnerships & connections
- Policies and laws
- Financing
- External pressure (societal / market)

Impacts of COVID-19 at the intersection of substance use disorder treatment and criminal justice systems: findings from three states

"And Then COVID Hits": A Qualitative Study of How Jails Adapted Services to Treat Opioid Use Disorder During COVID-19

COVID-19 impact on opioid overdose after jail release in Massachusetts

COVID-19 in corrections: Quarantine of incarcerated people

Predicting COVID-19 Outbreaks in Correctional Facilities Using Machine Learning

Effectiveness of interventions to reduce COVID-19 transmission in a large urban jail: a model-based analysis

COVID-19 Contact Tracing Conundrums: Insights From the Front Lines

COVID-19 vaccination in correctional systems in the United States

Ethical Approaches to Vaccine Allocation and Administration in Carceral Settings, With a Focus on Youth

Navigating intersecting public health crises: a qualitative study of people with opioid use disorders' experiences during the COVID-19 pandemic

The impact of COVID-19 on the treatment of opioid use disorder in carceral facilities: a cross-sectional study

COVID-19 and treating incarcerated populations for opioid use disorder

OUTER SETTING

- Critical incidents
- Local attitudes and beliefs
- Community resources
- Partnerships & connections
- Policies and laws
- Financing
- External pressure (societal / market)

Social Stigma toward Persons with Opioid Use Disorder: Results from a Nationally Representative Survey of U.S. Adults

A National Portrait of Public Attitudes toward Opioid Use in the US: A Latent Class Analysis

Opioid Use Disorder Stigma, Discrimination, and Policy Attitudes in a National Sample of U.S. Young Adults

Support for evidence-informed opioid policies and interventions: The role of racial attitudes, political affiliation, and opioid stigma

Individual, interpersonal, and neighborhood measures associated with opioid use stigma: Evidence from a nationally representative survey

Associations between partisan media consumption, opioid use disorder stigma, and opioid policy support: An exploration of the media's role in the ongoing opioid epidemic

National variability in Americans' COVID-19 protective behaviors: Implications for vaccine roll-out

OUTER SETTING

- Critical incidents
- Local attitudes and beliefs
- **Community resources**
- **Partnerships & connections**
- Policies and laws
- Financing
- External pressure (societal / market)

Linking criminal justice-involved individuals to HIV, Hepatitis C, and opioid use disorder prevention and treatment services upon release to the community: Progress, gaps, and future directions

Referral to and engagement in substance use disorder treatment within opioid intervention courts in New York: a qualitative study of implementation barriers and facilitators

Jail-based reentry programming to support continued treatment with medications for opioid use disorder: Qualitative perspectives and experiences among jail staff in Massachusetts

Medication for opioid use disorder treatment continuity post-release from jail: A qualitative study with community-based treatment providers

Critical access medication for opioid use disorder (MOUD) treatment facilities in the continental United States

Assessment of Community-Level Vulnerability and Access to Medications for Opioid Use Disorder

Spatial inequities in access to medications for treatment of opioid use disorder highlight scarcity of methadone providers under counterfactual scenarios

OUTER SETTING

- Critical incidents
- Local attitudes and beliefs
- Community resources
- Partnerships & connections
- Policies and laws
- Financing
- External pressure (societal / market)

"One guy goes to jail, two people are ready to take his spot": Perspectives on drug-induced homicide laws among incarcerated individuals

Drivers of County Engagement in Criminal Justice-Behavioral Health Initiatives

Statewide efforts to address the opioid epidemic: Results from a national survey of single state agencies

Association Between Assistance With Medicaid Enrollment and Use of Health Care After Incarceration Among Adults With a History of Substance Use

Allocation of federal funding to address the opioid overdose crisis in the criminal legal system

Medication-Assisted Treatment in Problem-solving Courts: A National Survey of State and Local Court Coordinators

Availability of best practices for opioid use disorder in jails and related training and resource needs: findings from a national interview study of jails in heavily impacted counties in the U.S

The impact of the opioid crisis on U.S. state prison systems

Correlates and Patterns in Use of Medications to Treat Opioid Use Disorder in Jail

Endorsement of COVID-19 misinformation among criminal legal involved individuals in the United States: Prevalence and relationship with information sources

"I Just Don't Know What to Believe": Sensemaking during the COVID-19 Pandemic among Criminal Legal Involved Communities

COVID-19 vaccine deliberation in individuals directly impacted by incarceration

A pilot study on COVID-19 vaccine hesitancy among healthcare workers in the US

Openness to change among COVID misinformation endorsers: Associations with social demographic characteristics and information source usage

Latent class analysis of medical mistrust and COVID-19 vaccine hesitancy among adults in the United States just prior to FDA emergency use authorization

The Relationship between Substance Use Stigma and COVID-19 Vaccine Hesitancy

The Thing Being Implemented

- Source/credibility
- Evidence base
- Relative advantage
- Complexity
- Adaptability
- Cost

Recidivism and mortality after in-jail buprenorphine treatment for opioid use disorder

Treatment outcomes associated with medications for opioid use disorder (MOUD) among criminal justice-referred admissions to residential treatment in the U.S., 2015–2018

Fatal and nonfatal opioid overdose risk following release from prison: A retrospective cohort study using linked administrative data

Use of long-acting injectable buprenorphine in the correctional setting

Estimating the impact of wide scale uptake of screening and medications for opioid use disorder in US prisons and jails

Changes In Health Services Use After Receipt Of Medications For Opioid Use Disorder In A Statewide Correctional System

The impact of the implementation of medication for opioid use disorder and COVID-19 in a statewide correctional system on treatment engagement, postrelease continuation of care, and overdose

Budget impact tool for the incorporation of medications for opioid use disorder into jail/prison facilities

The adoption and sustainability of digital therapeutics in justice systems: A pilot feasibility study

Barriers and poor telephone counseling experiences among patients receiving medication for opioid use disorders

Clinical Care, Research, and Telehealth Services in the Era of Social Distancing to Mitigate COVID-19

The Thing Being Implemented

- Source/credibility
- Evidence base
- Relative advantage
- Complexity
- Adaptability
- Cost

Uncommon and preventable: Perceptions of diversion of medication for opioid use disorder in jail

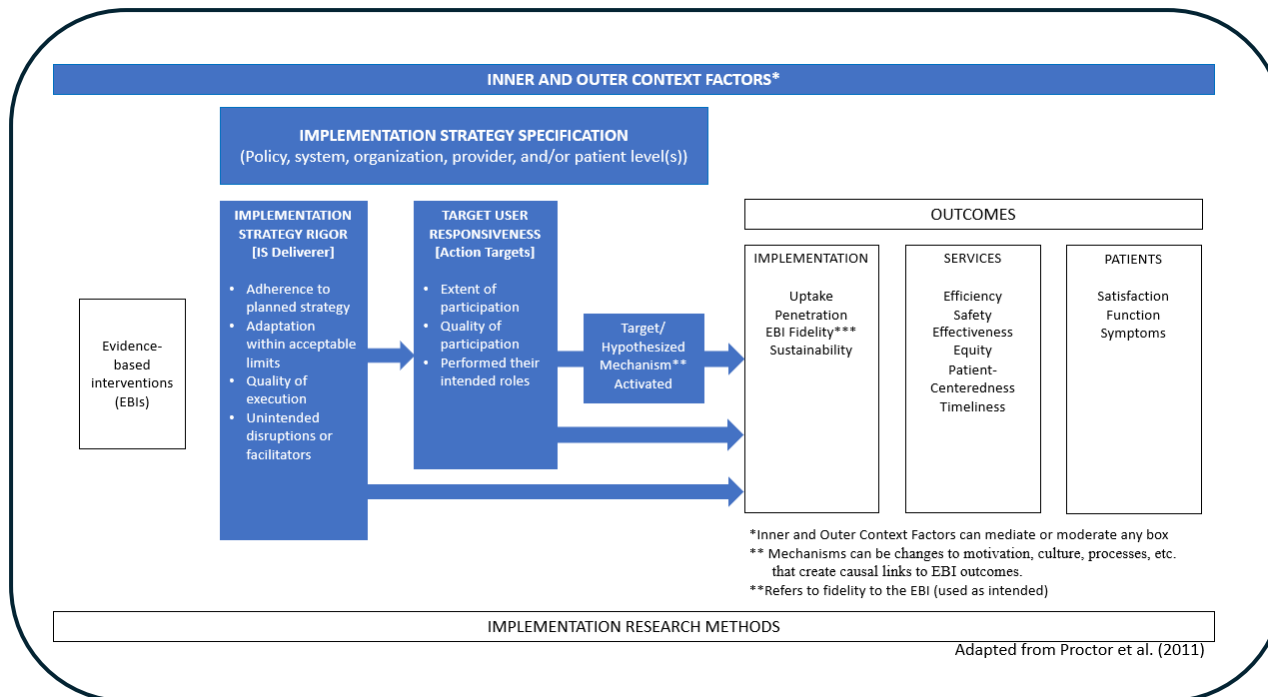
Diversion of medications to treat opioid use disorder: Qualitative findings from formerly incarcerated adults in Massachusetts

How do we know whether our strategies were
(a) consistently executed, and (b) related to the
implementation outcome?

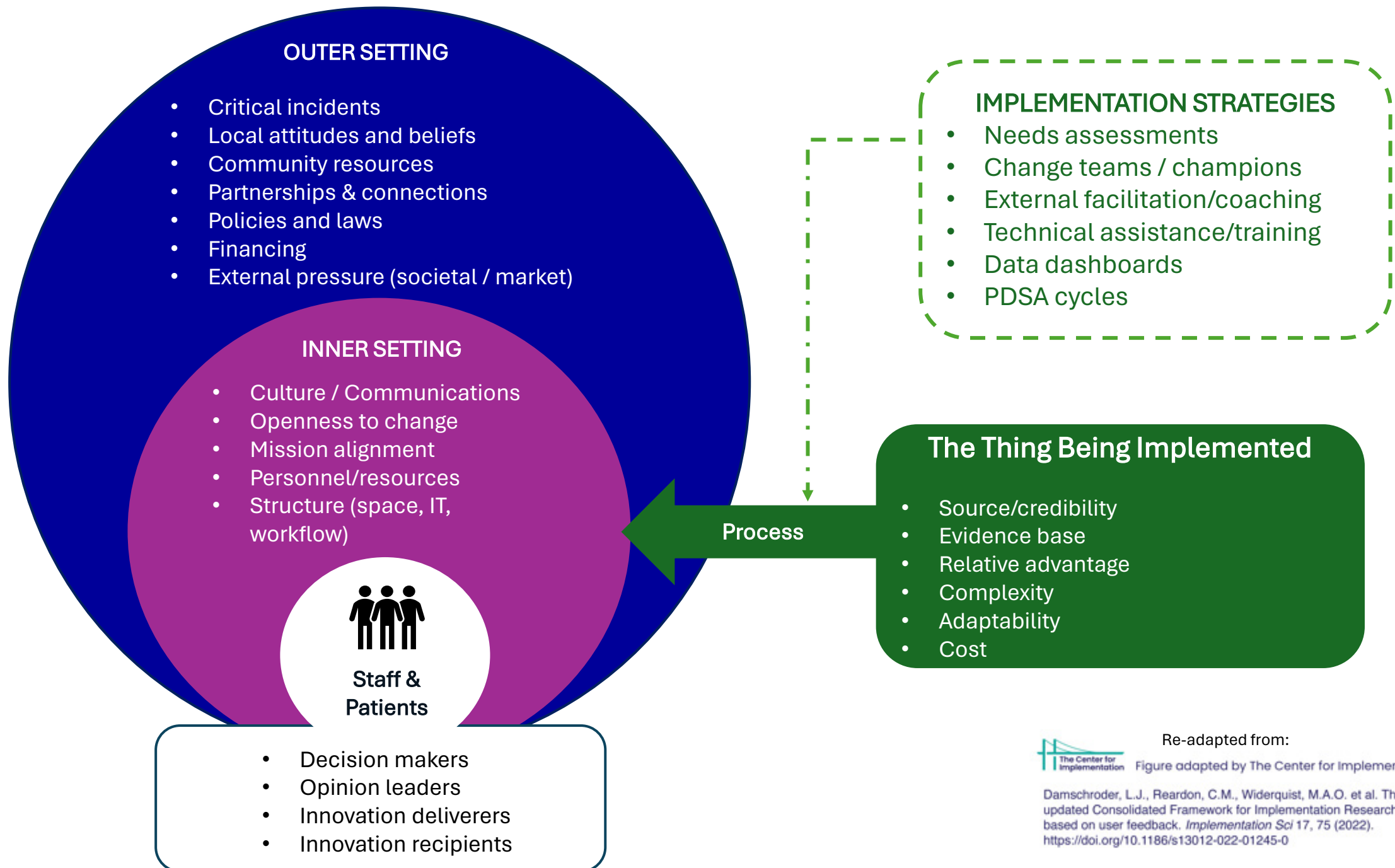


IMPLEMENTATION STRATEGIES

- Needs assessments
- Change teams / champions
- External facilitation/coaching
- Technical assistance/training
- Data dashboards
- PDSA cycles



“A Conceptual Framework for Assessing Implementation Strategy Integrity.”
T. Molfenter, L. Ducharme, L. Stein, S. Belenko, S. Mitchell, M. Aalsma, P. Friedmann, J. Becan, B. Garner, J. Vechinski, D. Watson, A. Bouris, E. Claypool, K. Elkington. *R&R at Implementation Research and Practice*





Celebrating You!



Pivoting and
Parrying





Mobile Outreach Clinic | Summer 2020 | Chicago, IL

PI: Christy Scott | Chestnut Health Systems



BUILDING CAPACITY

LEAP INVESTIGATOR PROGRAM

JRIG SMALL GRANTS

**ON-DEMAND TECHNICAL
ASSISTANCE**

**COURSES, WEBINARS, PODCASTS,
TRAININGS**

DATA TOOLS & RESOURCES

JCOIN DATA CENTER

MAARC MODELING PROJECTS

Learning
Experiences to
Advance Practice
LEAP
Scholars and Investigators
Program

2019 - 2024

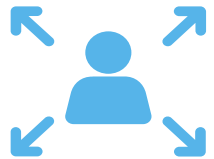
JCOIN
JUSTICE COMMUNITY
OPIOID INNOVATION
NETWORK

CTC
JCOIN Collaboration and Translation Center



RESEARCH

+



CAPACITY BUILDING

*Bridging the
Research-Practice Divide*

88 RESEARCH
PROTOCOLS

1 JCOIN DATA
CENTER

14 RAPID
INNOVATION
GRANTS

71 LEAP PROGRAM
TRAINEES

50+ COURSES
AVAILABLE

104 TECHNICAL
ASSISTANCE
ENGAGEMENTS

- Clinical Trials
- Modeling studies
- Geospatial/Mapping projects
- National surveys

- CDEs Across Studies
- Facilitates future collaboration

“Small” grants awarded to practitioners
and early-stage investigators/ideas

Education & mentoring; builds capacity for
both researchers and practitioners

+ Podcast, newsletter, webinars, & more.
>7000 course enrollments, 15,700 podcast
downloads

Free On-Demand Support
Funded through MOU with Bureau of
Justice Assistance (BJA)

Accelerating Impact



Photo Credit: Chestnut Health Systems Lighthouse Institute Community Outreach



Nearly 18,000 unique stakeholders engaged through JCOIN events and outreach as of June 2024



*Photo Credit: Chestnut Heath Systems Lighthouse
Institute Community Outreach Workers*

Accelerating Impact

Real Change in Communities Touched by JCOIN & Beyond

- 15 jurisdictions permanently added or expanded MOUD as part of usual jail services due to JCOIN exposure
 - Ex: Florida jail in WI trial completed OTP certification
- Kentucky justice and treatment partners deepened relationships through JCOIN & developed 1115 waiver application to expand MOUD in KY jails
- Indiana PI served on state task force, using JCOIN data to recommend universal screening for juveniles at arrest (state legislation pending)
- Two hubs changed university HR policies that imposed barriers to hiring people with lived SUD/CJ experience



Organizational Affiliations of LEAP Participants

Non-Academic

Alliance for HOPE International
Better Life Partners
Bowling Business Strategies
CODAC
Fairfax County VA
Department of Veterans Affairs
Franklin County Sheriff's Office
Hampden County Sheriff's Department
Massachusetts Trial Courts
Maryland Reentry Resource Center
Massachusetts Community Justice Project
NYC Correctional Health
Panacea Healthcare
Prison Cells To Professional, (P2P)
Richmond City Sheriff's Office
Rx Recovery
Stepping Stone, Inc
Texas Dept. of Corrections
Unity Health (CHC)
...and many more

Academic

Boston University School of Law
Cal State San Bernardino
U of TX Health Sciences
University of Iowa Hospitals and Clinics
University of Rochester
...and many more

Learning Experiences to Advance Practice (LEAP)

Scholars and Investigators
Program

2019 - 2024

JCOIN
JUSTICE COMMUNITY
OPIOID INNOVATION
NETWORK

CTC
JCOIN Coordination and Translation Cent



Thank You



Thank You

Project Managers, Peer Navigators, Research Assistants, Graduate Students, Analysts, and Everyone Else Who Made It All Happen

Thank You

Justice & Treatment Partners



CODAC Van used as part of Brown University JCOIN study Photo Courtesy of CODAC

Thank You

Justice & Treatment Partners



Franklin County Massachusetts Jail MOUD Dispensing
Photo Courtesy of Franklin County Sheriff's Department
Photo Credit: Elise Amendola, Associated Press 2018

Thank You

CTC & MAARC Teams & Collaborators:
Slonky, APF, TASC, NORC



Thank You

Participants



Image via Canva Premium



Looking Ahead

JCOIN 2.0



JCOIN Phase II Clinical Research Hubs (UM1, Clinical Trial Required): [RFA-DA-25-025](#)

JCOIN Phase II Innovation Hubs (R01, Clinical Trial Optional): [RFA-DA-25-062](#)

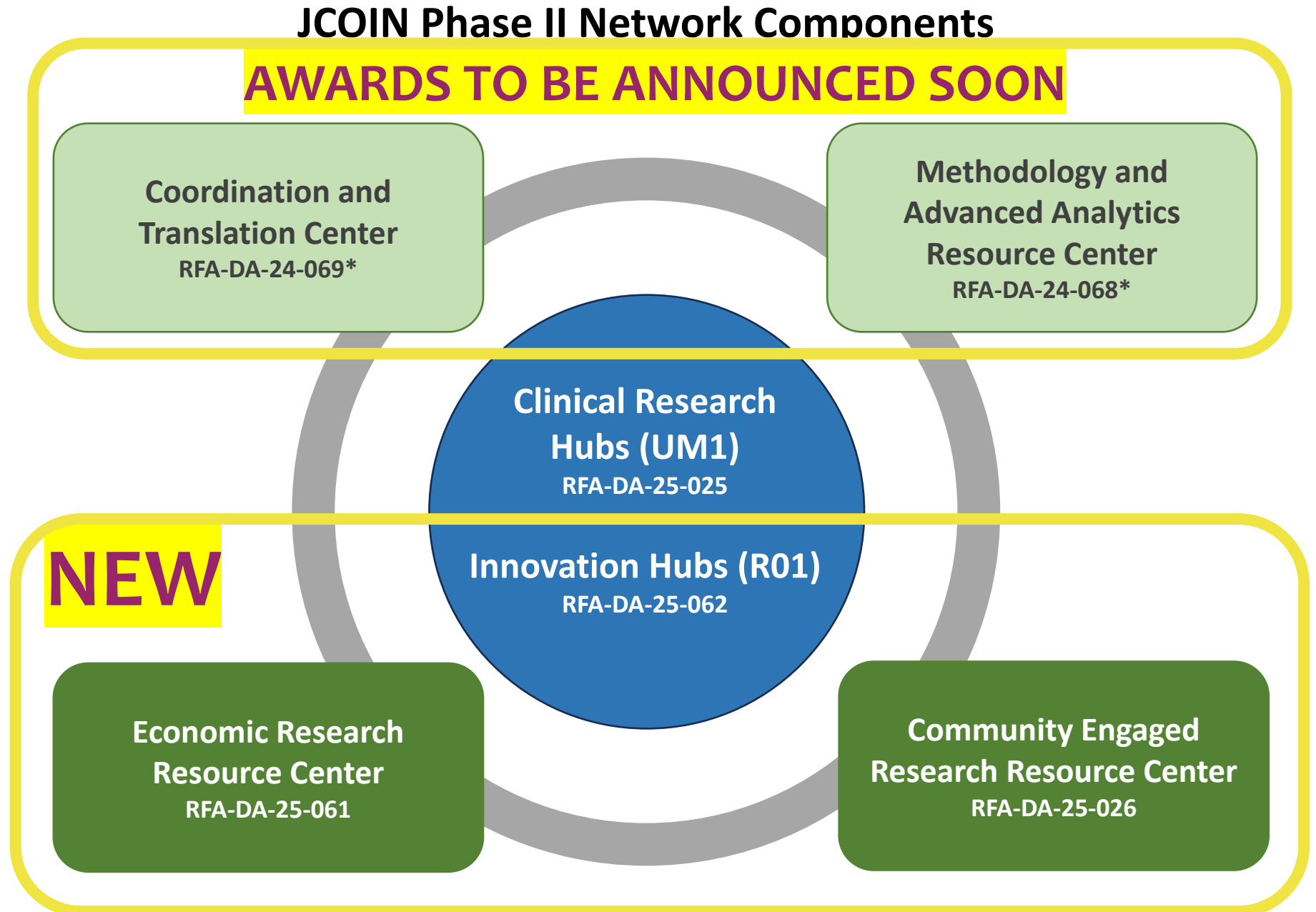
JCOIN Phase II Economic Research Resource Center (U24, Clinical Trial Optional): [RFA-DA-25-061](#)

JCOIN Phase II Community Engaged Research Resource Center (U24, Clinical Trial Optional): [RFA-DA-25-026](#)

CLINICAL RESEARCH AND INNOVATION HUBS study implementation and effectiveness of services to address overdose and SUD for persons involved in the criminal, legal, or juvenile justice systems.

COORDINATION AND RESOURCE CENTERS provide on-demand support to the hubs, conduct original research, and engage the research and practice communities.

*RFA-DA-24-068 and -069 closed on Oct 31, 2024.



RFA-DA-25-025 (UM1) & RFA-DA-25-062

- Justice Community **Overdose** Innovation Network
- Engaging **perspective of people with lived experience**
- Studies of **relevant policy implementation & impact** (1115 waivers)
- Expand to earlier intercept points – i.e., 911 / crisis response, police diversion/deflection programs
- Implementation trials to scale-up existing EBPs in CL settings
- Addressing common co-occurring conditions w/substance use (e.g., mental health)
- Other interests: stigma; technology tools for service delivery; special populations (e.g., women, adolescents, tribal)

JCOIN Phase 2 Core Features: UM1 vs. R01

	UM1 (DA-25-025)	R01 (DA-25-062)
Award Length	5 Years	5 Years
Budget	\$1M Direct/Year	\$450K/YR
Clinical Trial	Required	Optional
Required Sites	Minimum of 3 sites required	Multisite projects encouraged but not required
Design	Implementation or Hybrid Implementation-Effectiveness Required	Implementation & Hybrid Designs Encouraged Novel Effectiveness Designs Allowed
Economic Analyses	Encouraged Cost Outcomes Should be Included	Encouraged
Justice Partners	Required, As Appropriate to Study Design	Required, As Appropriate to Study Design
Services/ Community Partners	Required, As Appropriate to Study Design	Required, As Appropriate to Study Design
JCOIN Core Measures	Use As Appropriate	Use As Appropriate

*Application could be withdrawn if not included

JCOIN Phase 2 Network Collaboration: UM1 vs. R01

	UM1 (DA-25-025)	R01 (DA-25-062)
NIDA Involvement	Will have assigned Project Scientist	Will not have assigned NIDA Project Scientist
Anticipated Network Collaboration	SC Meetings, Workgroups, Harmonization Efforts, CTC Education Core Mentoring, CTC Rapid Response & Pilot Application Review	SC Meetings, Workgroups, Harmonization Efforts, CTC Education Core Mentoring, CTC Rapid Response & Pilot Application Review
Collaboration Incentive		
Annual Meeting Attendance	Required (budget for 3-5 team members)	Required (budget for 1-3 team members)
Community Engagement Resource Center Needs Assessment	Required in first 12 months	Required in first 12 months
Economics Resource Center Needs Assessment	Required in first 4 months	Required in first 12 months
Data Sharing	Required to JDC	Required to JDC
Clinical Trial Accrual Monitoring	Required	Required

JCOIN 2 Application Requirements: UM1 vs. R01

	UM1 (DA-25-025)	R01 (DA-25-062)
MPI Commitment	At least 1 MPI required to commit 2 calendar months*	At least 1 MPI required to commit 2 calendar months*
Study Sites	Sites must be in the US or US territories* Minimum 3 sites*	Sites must be in the US or US territories*
Stakeholder Engagement Plan	Required*	Required*
Enhancing Diverse Perspectives	Required*	Required*
Justice Partners	Letters of Support Required* Senior Biosketch Required*	Letters of Support Required* Senior Biosketch Required, As Appropriate to Study Design*
Services/Community Partners	Letters of Support Required* Senior Biosketch Required*	Letters of Support Required* Senior Biosketch Required, As Appropriate to Study Design*
Milestones	Required*	Not Required
Support for Individuals with Lived/Living Experience	Encouraged	Encouraged

*Application could be withdrawn if not included

JCOIN Phase II Informational Webinar for Potential Applicants

Details

Thursday, July 25, 2024 2:00pm to 3:30pm

Virtual

[Registration](#) 

Additional Information

This technical assistance webinar will outline the structure of the JCOIN Phase 2 network and describe the requirements of the associated RFAs – the Clinical Research Hubs ([RFA-DA-25-025](#)); the Innovation Hubs ([RFA-DA-25-062](#)), the Economic Research Resource Center (ERRC; [RFA-DA-25-061](#)), and the Community Engaged Research Resource Center (CERRC; [RFA-DA-25-026](#)). The presentation will be followed by a Q&A session.

This webinar is intended for potential applicants to any of the listed RFAs.

<https://nida.nih.gov/news-events/meetings-events/2024/07/jcoin-phase-ii-informational-webinar-potential-applicants>

BREAKING NEWS

NIDA Launches HIV/Justice Research Network

Multiple Regional
Research Hubs

Data Coordination
& Dissemination
Center

Patient
Engagement
Resource Center



HIV and Addiction Research **NE**twork in Justice **S**ystem**S** (HARNES**S**)

7 R61/R33 Regional Research Hubs and 2 Support Centers

Interventions for community residing individuals with prior criminal legal involvement

Akiyama*

RCT of DEST2nation implementation bundle with peer navigator (PN) for reentry in high HIV risk population vs reentry services as usual

Springer/Knight/Nijhawan/Staton*

RCT of STOP implementation bundle with PN and patient choice of service location/modality v PN referral to brick-and-mortar clinics only

Harawa/McCoy

Stepped wedge trial of MEPS implementation bundle w/ patient choice, PN, mobile app, and cash incentives

Interventions targeting incarceration and release as touchpoints

Wurcel/Evans^

Longitudinal interrupted time-series test of ID-TOUCH, offering HIV services at 5 touch points in jail and reentry with CHW

Frye/Hunt/El-Bassel*

Stepped wedge trial of TechMPower implementation bundle w/ local change teams/champions, telemedicine, PN, and stigma training

Brinkley-Rubinstein/Beckwith/Gordon^

RCT comparing co-located LAI PrEP/MOUD v. oral PrEP/MOUD

Intervention for law enforcement to create deflection pathways

Cepeda/Beletsky/Pitpitan

Interrupted time-series w/ modeling to test SHIELD 2.0 - LE training delivered by local BHW

Data Coordination and Dissemination Center (DCDC)

TBD

Patient Engagement Resource Center (PERC)

Dauria/Brinkley-Rubinstein

*Includes EHE treatment in addition to diagnosing and preventing HIV

^ Limited to individuals with OUD

Notice of Special Interest (NOSI) regarding the Availability of Emergency Competitive Revisions for Coordinating Center Infrastructure to Support Research on Opioid Overdose and HIV Risk in the Context of Justice Systems

Notice Number:
NOT-DA-24-013

Key Dates

Release Date:	May 20, 2024
First Available Due Date:	June 14, 2024
Expiration Date:	July 12, 2024

Related Announcements

- **March 10, 2020** - Emergency Competitive Revision to Existing NIH Awards (Emergency Supplement - Clinical Trial Optional). See NOFO [PA-24-201](#).

Issued by

National Institute on Drug Abuse ([NIDA](#))



Congressional
Briefing

**The Bipartisan Mental Health &
Substance Use Disorder Task Force**

in cooperation with

Friends of the National Institute on Drug Abuse (NIDA)

Invite you to a briefing and discussion on

**NIDA's Justice Community Opioid
Innovation Network (JCOIN)**

**Thursday, June 13, 2024
2:00-3:30 p.m.**

Rayburn House Office Building



Tisha Wiley, Ph.D.
Services Research
Branch, NIDA



Lisa Marsch, Ph.D.
Dartmouth College



Peter Friedmann, M.D.
UMass Medical
School-Baystate

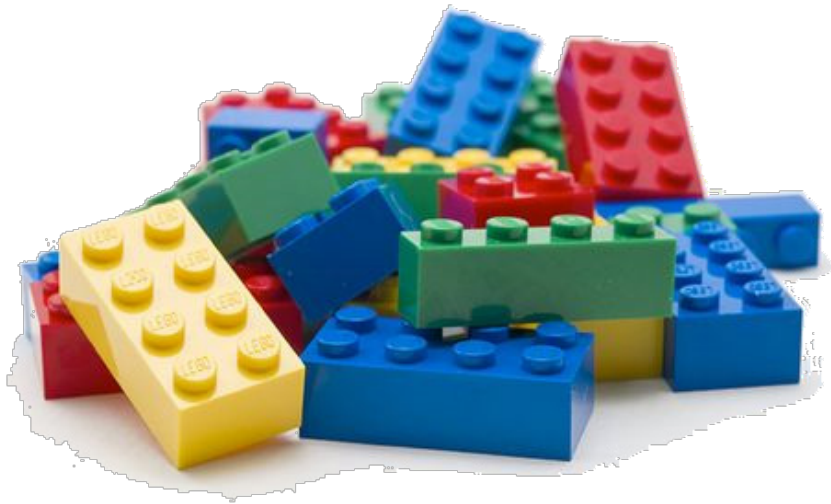


Joshua Lee, M.D.
New York University



Michele Staton, Ph.D.
University of Kentucky

Our primary shared goal is to ensure that our *collective impact* is greater than the sum of the parts.



In Summary:



Exceeds Expectations



Meets Expectations

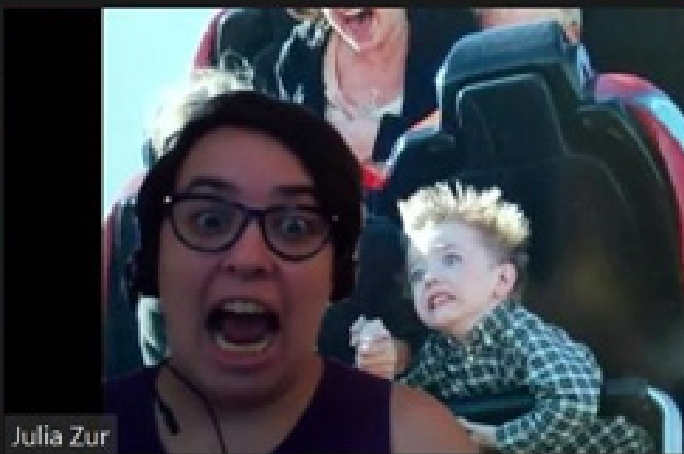


Fails to meet expectations



Thank You

NIDA Team & Leadership



Thank You

NIDA & NIH
Leadership

Justice Partners



Patients & Families

LEAP Participants

NIDA Team

Clinicians and Service Providers



Peer Navigators

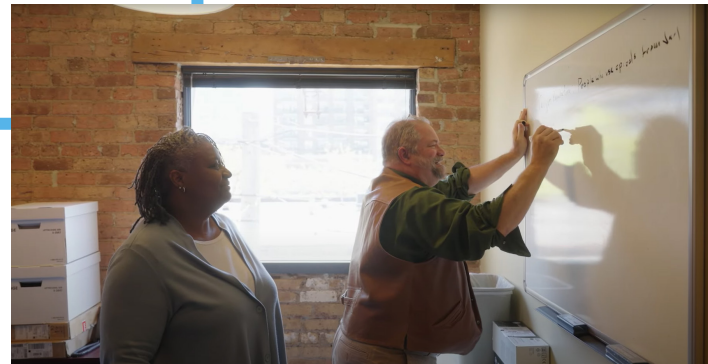
CTC Team

Community Partners

Practitioner Board



JCOINCTC.ORG



Hub Investigators & Research Teams

MAARC Team

BJA
& Other Federal Partners

tisha.wiley@nih.gov